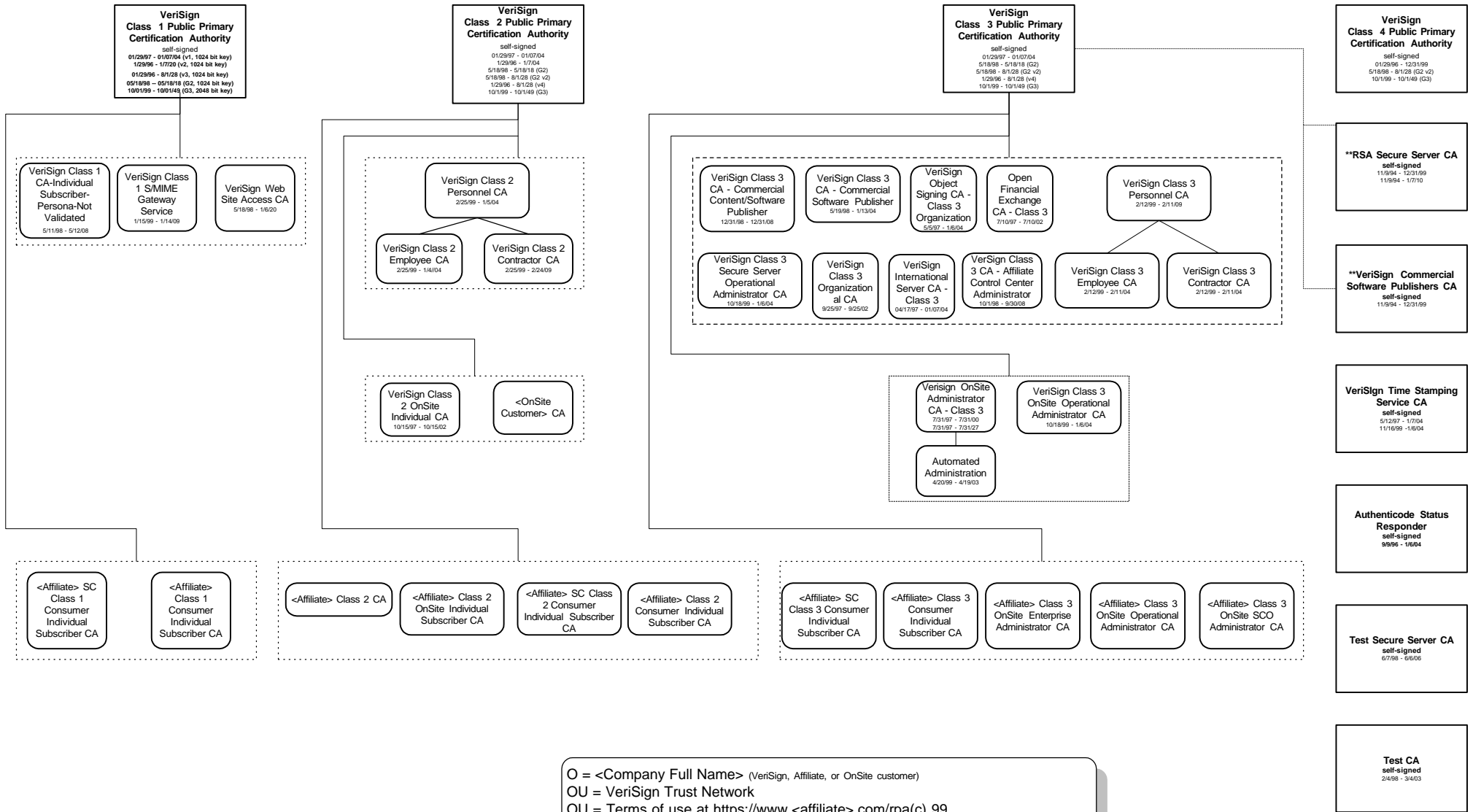


# VeriSign Key Hierarchy



O = <Company Full Name> (VeriSign, Affiliate, or OnSite customer)  
 OU = VeriSign Trust Network  
 OU = Terms of use at [https://www.<affiliate>.com/rpa\(c\) 99](https://www.<affiliate>.com/rpa(c) 99)  
 CN= {name, class, service, role} (i.e {VeriSign} {Class 2} {OnSite} {Individual Subscriber} {CA})

*\*\*The RSA Secure Server CA and the VeriSign Commercial Software Publisher's CA are not technically signed by the Class 3 PCA but they do provide assurances of trustworthiness comparable to Class 3 certificates issued to organizations. Hence, VeriSign designates them as issuing authorities within VeriSign's Public Certification Services.\**